

HASSON

TUNIQUE FEMME MC réf KELLY coton



Kelly blanc

Qualité : 100% coton 180g/m²



Style : Col rond
 Manches kimono
 1 poche poitrine
 2 poches basses
 Fermeture centrale par 5 grippers
 Longueur 80 cm
 Taille 0 à 6


 blanc

TAILLES



	0	1	2	3	4	5	6
A	76/84	84/92	92/100	100/108	108/116	116/124	124/132
B	56/64	64/72	72/80	80/88	88/96	96/104	104/112

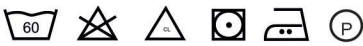
COLISAGE



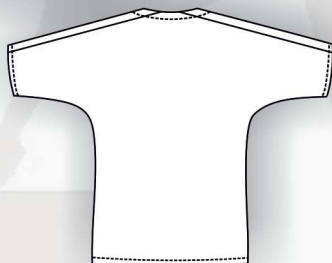
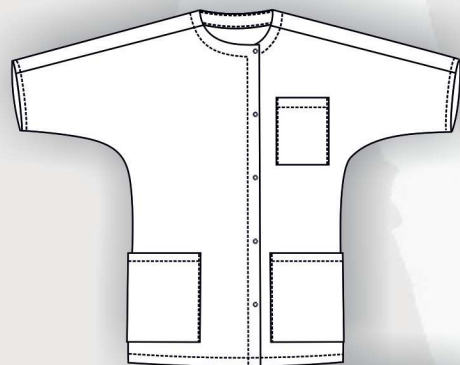
Sous sachet à l'unité
 Poids à la pièce : 0,420kg
 Taille carton : 60x40x26 cm

1

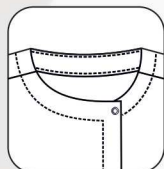
Code Entretien



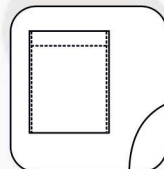
WHITE ONLY



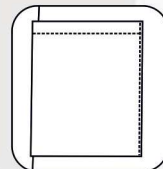
FOCUS DETAILS



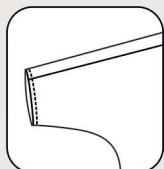
Encolure arrondie



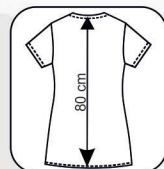
Poche poitrine



Poches basses



Manches kimono



Hauteur 80 cm

